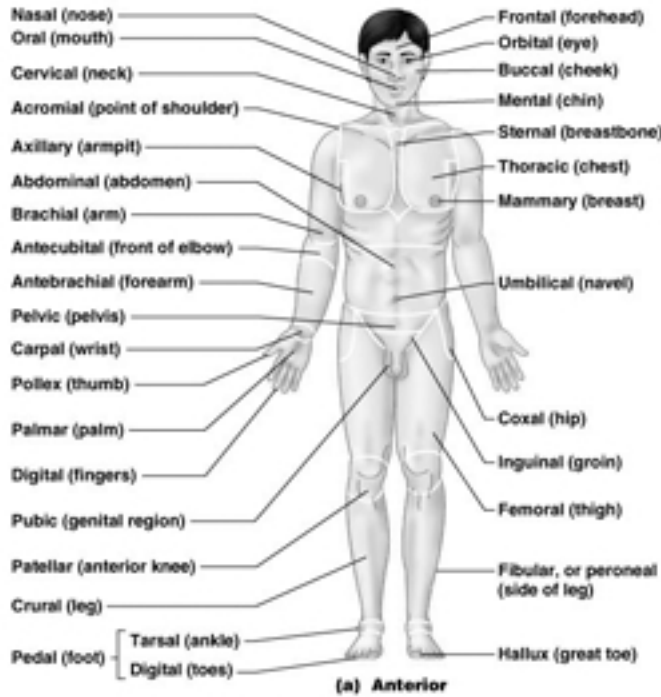


Surface Regions

Please note the borders of each region.

- * The suffix “-al” refers to an adjective. The suffix “-us” or “-um” refers to a nouns. Therefore, you may refer to either the “brachial region”, or the “brachium”. Both are correct.
- * Also notice: several regions have overlap. The “manus” refers tot he hand, but the front is called the “palmar region, and the back is the ”dorsum”.



Copyright © 2004 Pearson Education, Inc., publishing as Benjamin Cummings.

